

**Human Transferrin Fluorescein**  
**Catalog # ASR1102****Specification**

---

**Human Transferrin Fluorescein - Product Information**

Description	<b>HUMAN TRANSFERRIN Fluorescein conjugated</b>
Conjugate	<b>Fluorescein (FITC)</b>
FP Value	<b>1.68 moles Fluorescein (FITC) per mole of Human Transferrin</b>
Physical State	<b>Lyophilized</b>
Host Isotype	<b>Transferrin</b>
Buffer	<b>0.02 M Potassium Phosphate, 0.15 M Sodium Chloride, pH 7.2</b>
Species of Origin	<b>Human</b>
Reconstitution Volume	<b>1.0 mL</b>
Reconstitution Buffer	<b>Restore with deionized water (or equivalent)</b>
Stabilizer	<b>10 mg/mL Bovine Serum Albumin (BSA) - Immunoglobulin and Protease free</b>
Preservative	<b>0.01% (w/v) Sodium Azide</b>

**Human Transferrin Fluorescein - Additional Information****Shipping Condition**

Ambient

**Purity**

This product was prepared from normal serum by delipidation, selective precipitation and tandem molecular sieve chromatography followed by extensive dialysis against the buffer stated above. Assay by immunoelectrophoresis resulted in a single precipitin arc against anti-Fluorescein, anti-Human Transferrin and anti-Human Serum.

**Storage Condition**

Store vial at 4° C prior to restoration. For extended storage aliquot contents and freeze at -20° C or below. Avoid cycles of freezing and thawing. Centrifuge product if not completely clear after standing at room temperature. This product is stable for several weeks at 4° C as an undiluted liquid. Dilute only prior to immediate use.

**Precautions Note**

This product is for research use only and is not intended for therapeutic or diagnostic applications.

**Human Transferrin Fluorescein - Protein Information****Human Transferrin Fluorescein - Protocols**

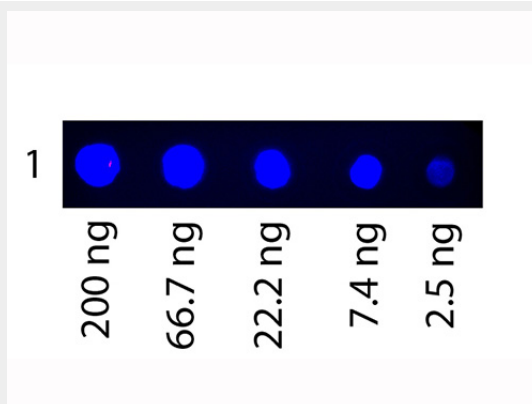
Provided below are standard protocols that you may find useful for product applications.

- [Western Blot](#)
- [Blocking Peptides](#)
- [Dot Blot](#)
- [Immunohistochemistry](#)
- [Immunofluorescence](#)
- [Immunoprecipitation](#)
- [Flow Cytometry](#)
- [Cell Culture](#)

#### Human Transferrin Fluorescein - Images



Dot Blot of Fluorescein conjugated Human Transferrin Antigen: Human Transferrin Fluorescein  
Load: 3-fold serial dilution starting at 200 ng Block: MB-070 for 30 min at RT



Dot Blot of Fluorescein conjugated Human Transferrin. Antigen: Human Transferrin Fluorescein.  
Load: 3-fold serial dilution starting at 200 ng. Block: None.

#### Human Transferrin Fluorescein - Background

This product is designed for immunofluorescence microscopy, fluorescence based plate assays (FLISA) and fluorescent western blotting. This product is also suitable for multiplex analysis, including multicolor imaging, utilizing various commercial platforms.